



**Water Monitoring Result at M5B - Central Cooling Water Intake Group
Mid-Flood Tide**

Date	Time	Weather Condition	Sampling Depth		Water Temperature			pH			Salinity			DO Saturation			DO			Turbidity			Suspended Solids	
					°C		-		ppt		%		mg/L		NTU		mg/L							
			m	Value	Average	Value	Average	Value	Average	Value	Average	Value	Average	Value	Average	Value	Average	Value	Average	Value	Average			
2/5/17	10:55	Fine	Middle	4.0	24.80	24.80	24.90	8.30	8.30	8.31	30.61	30.61	30.60	94.5	95.9	95.2	6.58	6.67	6.62	5.99	5.00	5.24	5	4.50
	10:57		Middle	4.0	25.00	25.00		8.32	8.32		30.59	30.59		95.2	95.1		6.62	6.61		4.97	4.98		4	
5/5/17	3:23	Cloudy	Middle	3.0	25.00	25.00	25.00	8.06	8.06	8.06	30.12	30.12	30.12	78.4	78.9	78.3	5.37	5.40	5.36	3.90	3.78	3.74	4	3.50
	3:24		Middle	3.0	25.00	25.00		8.06	8.06		30.12	30.12		78.3	77.7		5.36	5.32		3.80	3.47		3	
6/5/17	15:10	Fine	Middle	4.0	26.00	26.00	26.10	8.37	8.37	8.38	30.80	30.80	30.80	97.4	97.6	97.4	6.63	6.64	6.63	2.43	2.46	2.37	4	3.00
	15:12		Middle	4.0	26.20	26.20		8.38	8.38		30.80	30.80		97.6	97.0		6.64	6.60		2.33	2.24		2	
8/5/17	17:00	Fine	Middle	4.0	25.80	25.80	25.90	8.36	8.36	8.37	31.55	31.55	31.55	98.7	98.7	98.3	6.71	6.71	6.68	3.27	3.29	3.29	3	2.50
	17:02		Middle	4.0	26.00	26.00		8.37	8.37		31.54	31.54		98.0	97.7		6.66	6.63		3.29	3.30		2	
10/5/17	19:10	Cloudy	Middle	3.0	26.90	26.90	26.90	8.07	8.07	8.07	31.04	31.04	31.04	77.0	77.6	77.4	5.07	5.10	5.10	4.24	4.22	4.34	4	4.50
	19:11		Middle	3.0	26.90	26.90		8.07	8.07		31.04	31.04		77.5	77.5		5.10	5.11		4.41	4.48		5	
12/5/17	20:58	Cloudy	Middle	3.5	26.20	26.20	26.15	7.95	7.97	7.96	30.81	30.81	30.81	76.1	76.3	76.4	5.19	5.20	5.21	4.78	4.30	4.38	6	5.50
	20:59		Middle	3.5	26.10	26.10		7.97	7.95		30.81	30.81		76.6	76.7		5.21	5.22		4.23	4.19		5	
15/5/17	9:35	Cloudy	Middle	3.5	25.30	25.30	25.30	7.92	7.92	7.95	30.33	30.33	30.33	89.2	89.1	88.9	6.17	6.16	6.15	3.52	3.24	3.31	10	9.00
	9:37		Middle	3.5	25.30	25.30		7.98	7.98		30.33	30.33		89.3	88.1		6.17	6.08		3.23	3.23		8	
17/5/17	8:05	Fine	Middle	3.5	25.40	25.40	25.40	7.77	7.77	7.82	30.28	30.28	30.27	91.2	91.2	91.2	6.30	6.30	6.30	2.60	2.58	2.70	5	5.50
	8:07		Middle	3.5	25.40	25.40		7.87	7.87		30.26	30.26		91.1	91.1		6.30	6.30		2.76	2.86		6	
20/5/17	2:33	Cloudy	Middle	3.5	25.40	25.40	25.40	7.78	7.78	7.81	30.90	30.90	30.91	73.8	74.6	73.7	5.08	5.14	5.08	1.62	1.60	1.51	2	2.00
	2:34		Middle	3.5	25.40	25.40		7.83	7.83		30.91	30.91		74.3	72.1		5.12	4.96		1.43	1.40		2	
22/5/17	14:15	Cloudy	Middle	3.5	25.20	25.20	25.20	7.98	7.98	8.00	31.32	31.32	31.32	90.3	90.5	90.0	6.23	6.24	6.21	3.43	3.49	3.50	3	3.00
	14:17		Middle	3.5	25.20	25.20		8.02	8.02		31.32	31.32		89.6	89.5		6.18	6.17		3.53	3.55		3	
24/5/17	-	Amber Rainstorm Warning Signal	Middle	-	-	-	-	-	-	-	-	-	-	-	-	-	-	-	-	-	-	-	-	-
	-		Middle	-	-	-		-	-		-	-		-	-		-	-		-	-		-	
26/5/17	21:02	Fine	Middle	3.5	25.10	25.10	25.05	8.18	8.18	8.18	30.51	30.51	30.51	74.4	74.3	74.3	5.17	5.17	5.16	6.23	6.20	6.21	3	3.00
	21:03		Middle	3.5	25.00	25.00		8.18	8.18		30.51	30.51		74.7	73.9		5.18	5.13		6.21	6.18		3	
29/5/17	8:04	Fine	Middle	3.5	25.70	25.70	25.70	8.05	8.05	8.06	31.13	31.13	31.13	90.6	90.9	90.7	6.20	6.22	6.21	6.21	6.27	6.27	4	4.00
	8:06		Middle	3.5	25.70	25.70		8.07	8.07		31.13	31.13		90.8	90.4		6.21	6.19		6.29	6.32		4	
31/5/17	9:30	Fine	Middle	3.5	27.00	27.00	27.05	8.06	8.06	8.08	30.53	30.53	30.53	93.1	93.2	93.2	6.25	6.25	6.25	4.45	4.44	4.45	<2	<2
	9:32		Middle	3.5	27.10	27.10		8.09	8.09		30.53	30.53		93.0	93.3		6.24	6.25		4.44	4.46		<2	

Remarks:

The water quality monitoring events on 24 May 2017 during both flood and ebb tide were cancelled due to the hoisting of Amber Rainstorm Warning Signal.

Single underline denotes exceedance over Action Level.

Double underline denotes exceedance over Limit Level.



**Water Monitoring Result at Culvert J - Reference Station
Mid-Flood Tide**

Date	Time	Weather Condition	Sampling Depth		Water Temperature			pH			Salinity			DO Saturation			DO			Turbidity			Suspended Solids	
			m		°C		-		ppt		%		mg/L		NTU		mg/L							
					Value	Average	Value	Average	Value	Average	Value	Average	Value	Average	Value	Average	Value	Average						
2/5/17	10:50	Fine	Middle	3.5	25.60	25.60	25.60	8.25	8.25	8.25	29.42	29.42	29.42	83.7	83.6	83.3	5.82	5.81	5.79	6.00	6.05	6.10	4	5.00
	10:52		Middle	3.5	25.60	25.60		8.25	8.25		29.42	29.42		82.6	83.2		5.76	5.78		6.16	6.17		6	
5/5/17	3:31	Cloudy	Middle	2.5	25.20	25.20	25.20	8.09	8.09	8.08	22.92	22.92	22.91	57.8	58.7	58.1	4.15	4.21	4.17	9.58	9.34	9.40	20	19.50
	3:32		Middle	2.5	25.20	25.20		8.09	8.05		22.90	22.90		58.0	57.8		4.16	4.14		9.38	9.30		19	
6/5/17	15:05	Fine	Middle	3.5	26.50	26.50	26.65	8.33	8.33	8.34	30.83	30.83	30.82	93.5	93.8	93.1	6.30	6.32	6.27	4.49	4.39	4.47	2	2.50
	15:07		Middle	3.5	26.80	26.80		8.35	8.35		30.80	30.80		93.3	91.8		6.28	6.18		4.50	4.48		3	
8/5/17	16:55	Fine	Middle	4.0	26.00	26.00	25.95	8.33	8.33	8.33	29.70	29.70	29.70	82.4	82.6	82.3	6.66	6.68	6.16	6.63	6.63	6.66	3	4.00
	16:57		Middle	4.0	25.90	25.90		8.32	8.32		29.70	29.70		82.0	82.0		5.64	5.64		6.66	6.70		5	
10/5/17	19:18	Cloudy	Middle	2.5	27.00	27.10	27.08	8.02	8.02	8.02	28.16	28.16	28.16	68.1	68.8	68.4	4.55	4.60	4.57	3.53	3.53	3.42	5	5.50
	19:19		Middle	2.5	27.10	27.10		8.02	8.02		28.16	28.16		68.4	68.1		4.57	4.56		3.29	3.33		6	
12/5/17	21:12	Cloudy	Middle	3.0	26.40	26.40	26.25	8.06	8.06	8.06	29.08	29.08	29.08	71.9	73.3	72.3	4.94	5.04	4.97	2.92	2.84	2.86	5	5.00
	21:13		Middle	3.0	26.10	26.10		8.06	8.06		29.07	29.07		71.9	72.1		4.94	4.95		2.78	2.88		5	
15/5/17	9:30	Cloudy	Middle	3.5	25.20	25.20	25.20	8.05	8.05	8.05	21.59	21.59	21.60	82.3	82.1	81.8	5.99	5.99	5.96	32.66	32.66	32.70	14	14.00
	9:32		Middle	3.5	25.20	25.20		8.05	8.05		21.60	21.60		81.4	81.4		5.93	5.93		32.80	32.68		14	
17/5/17	8:00	Fine	Middle	3.5	25.50	25.50	25.55	7.87	7.87	7.85	23.89	23.89	23.89	84.4	84.1	83.7	6.03	6.01	5.98	8.22	8.21	8.20	8	7.50
	8:02		Middle	3.5	25.60	25.60		7.82	7.82		23.88	23.88		83.2	83.1		5.95	5.94		8.19	8.19		7	
20/5/17	2:45	Cloudy	Middle	3.0	25.40	25.40	25.40	7.95	7.95	7.93	20.98	20.98	20.98	18.8	20.1	20.0	1.37	1.46	1.45	2.12	2.14	2.08	14	14.00
	2:46		Middle	3.0	25.40	25.40		7.90	7.90		20.98	20.98		20.4	20.6		1.48	1.50		2.04	2.01		14	
22/5/17	14:10	Cloudy	Middle	3.5	25.10	25.10	25.15	7.97	7.97	7.97	29.61	29.61	29.61	77.9	77.9	77.6	5.42	5.42	5.40	6.32	6.29	6.27	5	4.50
	14:12		Middle	3.5	25.20	25.20		7.97	7.97		29.61	29.61		77.3	77.2		5.39	5.37		6.25	6.21		4	
24/5/17	-	Amber Rainstorm Warning Signal	Middle	-	-	-	-	-	-	-	-	-	-	-	-	-	-	-	-	-	-	-	-	-
	-		Middle	-	-	-		-	-		-	-		-	-		-	-		-	-		-	
26/5/17	21:10	Fine	Middle	3.0	25.00	25.00	25.00	8.23	8.23	8.22	25.18	25.18	25.18	56.4	58.4	57.7	4.04	4.18	4.14	11.16	11.24	11.20	3	3.00
	21:11		Middle	3.0	25.00	25.00		8.20	8.20		25.18	25.18		58.2	57.9		4.17	4.15		11.20	11.18		<2	
29/5/17	8:00	Fine	Middle	3.5	25.70	25.70	25.70	8.04	8.04	8.05	29.40	29.40	29.40	84.8	86.0	85.5	5.86	5.94	5.91	6.73	6.70	6.72	5	4.00
	8:02		Middle	3.5	25.70	25.70		8.05	8.05		29.40	29.40		85.4	85.7		5.90	5.92		6.71	6.73		3	
31/5/17	9:25	Fine	Middle	3.5	27.30	27.30	27.35	8.07	8.07	8.08	28.91	28.91	28.91	85.2	85.3	85.3	5.74	5.74	5.74	4.23	4.23	4.23	<2	<2
	9:27		Middle	3.5	27.40	27.40		8.08	8.08		28.91	28.91		85.4	85.3		5.75	5.74		4.23	4.21		<2	

Remarks:
The water quality monitoring events on 24 May 2017 during both flood and ebb tide were cancelled due to the hoisting of Amber Rainstorm Warning Signal.



Water Monitoring Result at M5B - Central Colling Water Intake Group
Mid-Ebb Tide

Date	Time	Water Condition	Sampling Depth		Water Temperature			pH			Salinity			DO Saturation			DO			Turbidity			Suspended Solids	
					°C			-			ppt			%			mg/L			NTU			mg/L	
			m	Value	Average	Value	Average	Value	Average	Value	Average	Value	Average	Value	Average	Value	Average	Value	Average	Value	Average	Value	Average	
2/5/17	16:35	Fine	Middle	3.5	25.10	25.10	25.20	8.36	8.63	8.43	31.18	31.18	31.18	97.2	97.4	96.6	6.70	6.71	6.65	3.49	3.54	3.46	3	3.50
	16:37		Middle	3.5	25.30	25.30		8.37	8.37		31.17	31.17		95.8	95.8		6.60	6.60		3.41	3.41		4	
4/5/17	20:22	Cloudy	Middle	3.5	24.60	24.60	24.60	8.15	8.15	8.15	30.17	30.18	30.17	80.9	81.1	81.1	5.67	5.69	5.69	3.37	3.16	3.19	<2	2.00
	20:23		Middle	3.5	24.60	24.60		8.15	8.15		30.17	30.17		81.3	81.2		5.70	5.69		3.12	3.10		2	
6/5/17	20:30	Cloudy	Middle	1.8	25.40	25.40	25.45	8.01	8.01	8.03	31.00	31.00	31.00	81.1	80.4	80.5	5.57	5.52	5.53	2.31	2.49	2.34	<2	<2
	20:31		Middle	1.8	25.50	25.50		8.04	8.04		30.99	30.99		80.0	80.6		5.49	5.53		2.35	2.20		<2	
8/5/17	10:25	Cloudy	Middle	3.5	25.10	25.10	25.15	8.35	8.35	8.36	31.76	31.77	31.76	92.8	93.0	92.2	6.38	6.42	6.34	2.90	2.88	2.88	2	3.00
	10:27		Middle	3.5	25.20	25.20		8.37	8.37		31.76	31.75		91.1	92.0		6.25	6.31		2.87	2.87		4	
10/5/17	11:40	Cloudy	Middle	3.5	26.30	26.30	26.35	7.89	7.89	7.91	30.64	30.64	30.64	93.8	94.9	94.0	6.36	6.43	6.37	3.41	3.40	3.45	2	3.00
	11:42		Middle	3.5	26.40	26.40		7.93	7.93		30.63	30.63		94.1	93.3		6.38	6.32		3.49	3.49		4	
12/5/17	11:25	Fine	Middle	3.5	26.70	26.70	26.80	7.95	7.95	7.96	30.77	30.77	30.77	94.5	94.8	94.2	6.36	6.37	6.33	3.22	3.14	3.20	<2	<2
	11:27		Middle	3.5	26.90	26.90		7.97	7.97		30.77	30.77		93.6	94.0		6.29	6.31		3.22	3.22		<2	
15/5/17	14:25	Cloudy	Middle	3.5	25.60	25.60	25.60	7.88	7.88	7.92	29.63	29.63	29.63	90.7	90.5	90.4	6.26	6.25	6.19	3.07	3.06	3.05	8	8.50
	14:27		Middle	3.5	25.60	25.60		7.96	7.96		29.63	29.63		90.2	90.0		6.23	6.00		3.05	3.03		9	
17/5/17	16:25	Fine	Middle	3.5	26.20	26.20	26.30	7.79	7.79	7.85	30.54	30.54	30.55	87.6	88.0	87.8	5.95	5.98	5.96	2.96	2.88	2.89	8	9.00
	16:27		Middle	3.5	26.40	26.40		7.90	7.90		30.55	30.55		88.0	87.4		5.98	5.93		2.89	2.83		10	
19/5/17	19:00	Cloudy	Middle	3.5	25.10	25.10	25.10	8.15	8.15	8.16	31.73	31.73	31.73	76.0	76.4	75.3	5.23	5.26	5.18	3.48	3.50	3.43	3	3.00
	19:01		Middle	3.5	25.10	25.10		8.16	8.16		31.73	31.73		74.2	74.7		5.11	5.13		3.39	3.35		3	
22/5/17	9:40	Cloudy	Middle	3.5	25.20	25.80	83.45	7.80	7.80	7.86	31.39	31.39	31.39	88.5	88.7	88.6	6.10	6.11	6.10	4.47	4.43	4.29	4	4.50
	9:42		Middle	3.5	25.20	25.20		7.91	7.91		31.38	31.38		89.0	88.1		6.13	6.07		4.16	4.09		5	
24/5/17	-	Amber Rainstorm Warning Signal	Middle	-	-	-	-	-	-	-	-	-	-	-	-	-	-	-	-	-	-	-	-	-
	-		Middle	-	-	-		-	-		-	-		-	-		-	-		-	-		-	
26/5/17	10:55	Fine	Middle	4.0	25.80	25.80	25.85	8.07	8.07	8.07	30.60	30.60	30.60	90.8	91.3	91.0	6.21	6.24	6.23	4.34	4.34	4.34	5	4.50
	10:57		Middle	4.0	25.90	25.90		8.07	8.07		30.60	30.60		91.0	90.8		6.23	6.22		4.34	4.35		4	
29/5/17	15:22	Fine	Middle	3.0	26.80	26.80	26.95	7.98	7.98	8.00	30.92	30.92	30.91	93.4	93.5	93.2	6.27	6.27	6.25	4.24	4.11	4.18	3	2.50
	15:24		Middle	3.0	27.10	27.10		8.02	8.02		30.90	30.90		92.9	92.9		6.23	6.23		4.17	4.19		2	
31/5/17	16:45	Fine	Middle	3.5	28.60	28.60	28.75	8.05	8.05	8.06	30.02	30.02	30.02	85.3	85.6	86.1	5.58	5.60	5.62	3.44	3.44	3.44	<2	<2
	16:47		Middle	3.5	28.90	28.90		8.07	8.07		30.01	30.01		86.7	86.6		5.66	5.65		3.44	3.44		<2	

Remarks:

The water quality monitoring events on 24 May 2017 during both flood and ebb tide were cancelled due to the hoisting of Amber Rainstorm Warning Signal.

Single underline denotes exceedance over Action Level.

Double underline denotes exceedance over Limit Level.



**Water Monitoring Result at Culvert J - Reference Station
Mid-Ebb Tide**

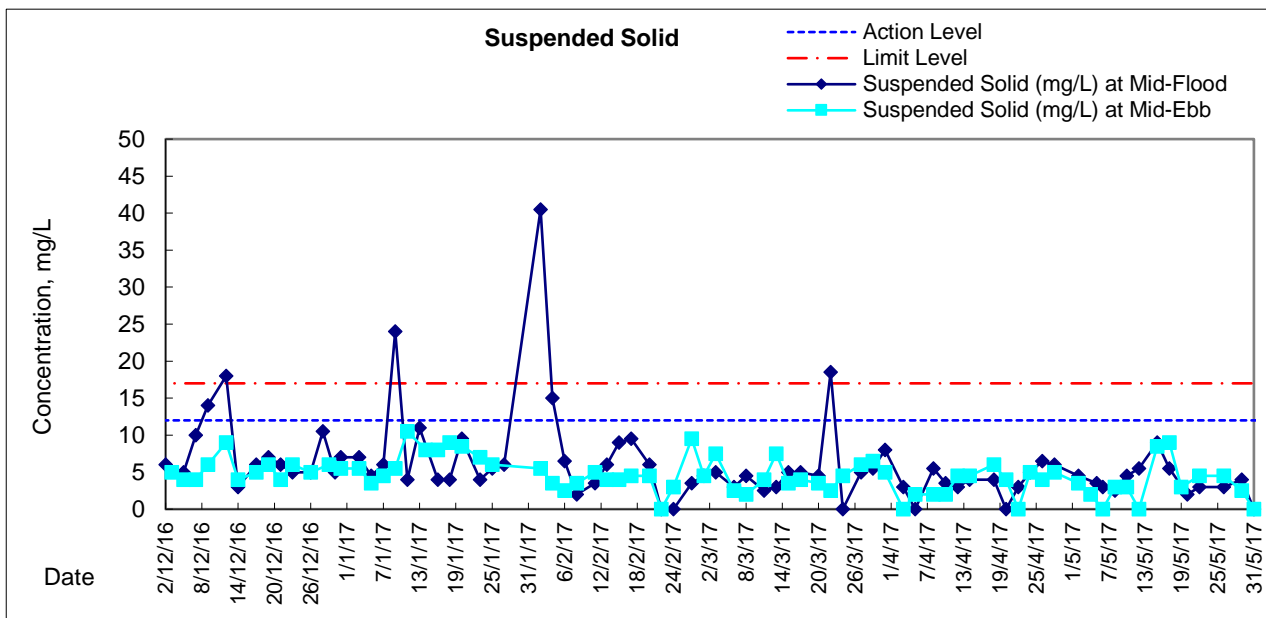
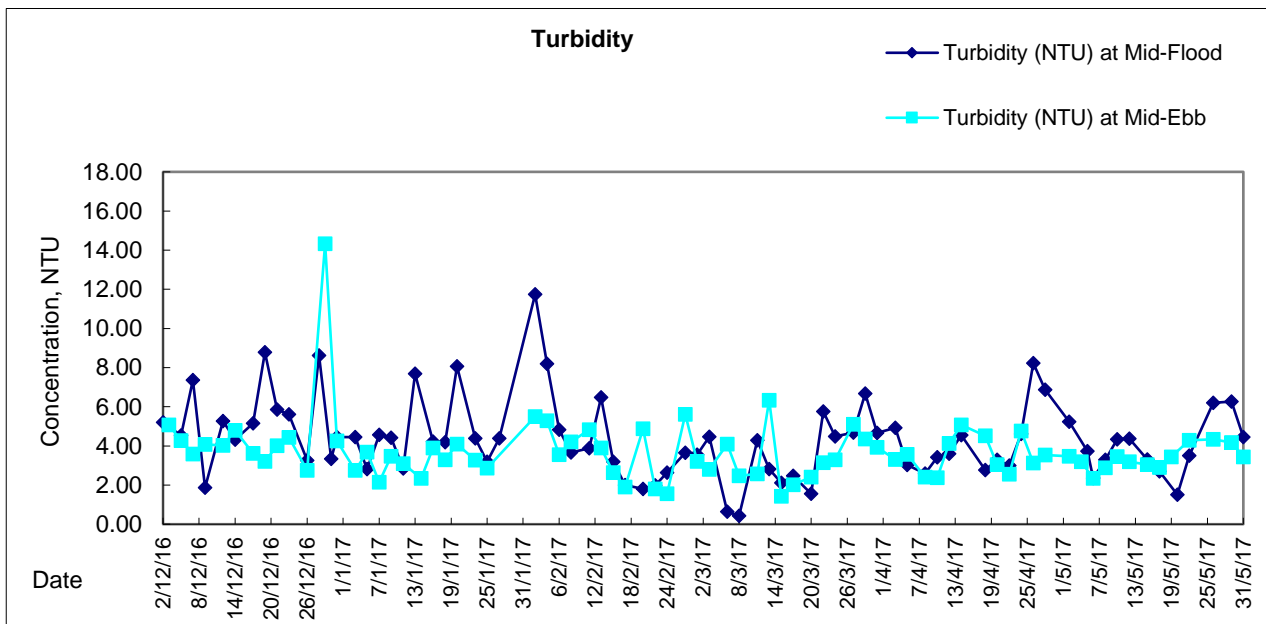
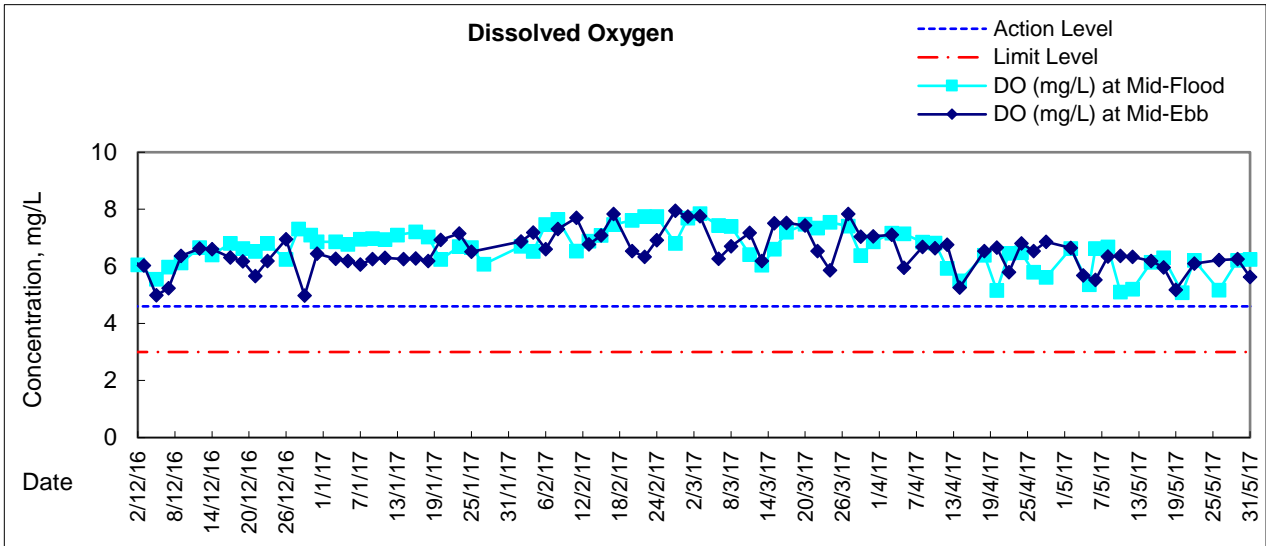
Date	Time	Water Condition	Sampling Depth		Water Temperature			pH			Salinity			DO Saturation			DO			Turbidity			Suspended Solids	
					°C			-			ppt			%			mg/L			mg/L				
			m	Value	Average	Value	Average	Value	Average	Value	Average	Value	Average	Value	Average	Value	Average	Value	Average	Value	Average			
2/5/17	16:30	Fine	Middle	4	25.50	25.50	25.55	8.34	8.34	8.35	31.19	31.19	31.19	92.3	91.8	91.5	6.33	6.30	6.27	3.85	3.86	3.83	3	3.50
	16:32		Middle	4	25.60	25.60		8.36	8.36		31.19	31.19		91.0	90.8		6.24	6.22		3.76	3.84		4	
4/5/17	20:28	Cloudy	Middle	3	24.40	24.40	24.45	8.17	8.17	8.14	25.65	25.65	25.65	73.8	73.9	73.8	5.32	5.33	5.32	10.74	10.72	10.70	8	6.50
	20:29		Middle	3	24.50	24.50		8.11	8.11		25.64	25.64		73.6	74.0		5.29	5.33		10.68	10.66		5	
6/5/17	20:36	Cloudy	Middle	2	25.60	25.60	25.65	8.08	8.08	8.06	26.65	26.65	26.65	71.6	71.9	71.1	5.03	5.05	4.99	1.67	1.65	1.65	4	4.00
	20:37		Middle	2	25.70	25.70		8.03	8.03		26.65	26.65		70.2	70.5		4.93	4.95		1.64	1.62		4	
8/5/17	10:20	Cloudy	Middle	4	25.40	25.40	25.60	8.32	8.32	8.32	30.60	30.60	30.60	80.1	79.9	79.6	5.50	5.48	5.45	5.24	5.21	5.25	2	2.00
	10:22		Middle	4	25.80	25.80		8.31	8.31		30.59	30.59		79.0	79.2		5.41	5.42		5.27	5.29		2	
10/5/17	11:35	Cloudy	Middle	4	26.70	26.70	26.80	7.85	7.85	7.86	29.20	29.20	29.20	85.2	85.2	85.1	5.78	5.78	5.77	5.32	5.23	5.24	3	3.50
	11:37		Middle	4	26.90	26.90		7.87	7.87		29.19	29.19		85.2	84.8		5.77	5.74		5.20	5.20		4	
12/5/17	11:20	Fine	Middle	4	27.20	27.20	27.35	7.88	7.88	7.90	30.45	30.45	30.45	89.6	90.0	89.6	5.99	6.00	5.98	4.32	4.32	4.20	4	4.00
	11:22		Middle	4	27.50	27.50		7.92	7.92		30.45	30.45		89.3	89.5		5.95	5.96		4.11	4.03		4	
15/5/17	14:20	Cloudy	Middle	3	25.50	25.50	25.50	7.99	7.99	7.99	21.33	21.33	21.33	81.1	80.6	80.2	5.89	5.85	5.82	26.78	26.78	26.81	8	7.50
	14:22		Middle	3	25.50	25.50		7.99	7.99		21.33	21.33		79.8	79.2		5.79	5.75		26.83	26.83		7	
17/5/17	16:20	Fine	Middle	4	26.60	26.60	26.80	7.99	7.99	7.92	25.83	25.83	25.85	73.4	73.5	73.2	5.08	5.09	5.07	32.01	31.99	31.48	8	7.00
	16:22		Middle	4	27.00	27.00		7.85	7.85		25.87	25.87		73.1	72.7		5.06	5.03		30.99	30.93		6	
19/5/17	19:07	Cloudy	Middle	3	25.30	25.30	25.25	8.17	8.17	8.15	24.42	24.42	24.42	42.3	43.1	42.9	3.04	3.09	3.07	17.92	17.88	17.86	7	7.50
	19:08		Middle	3	25.20	25.20		8.12	8.12		24.42	24.42		43.3	42.7		3.10	3.06		17.82	17.81		8	
22/5/17	9:35	Cloudy	Middle	4	26.80	26.80	26.35	7.92	7.92	7.90	25.85	25.85	26.90	68.2	67.8	67.7	4.83	4.80	4.79	9.57	9.58	9.49	7	6.50
	9:37		Middle	4	25.90	25.90		7.88	7.88		25.94	25.94		67.5	67.3		4.78	4.76		9.39	9.41		6	
24/5/17	-	Amber Rainstorm Warning Signal	Middle	-	-	-	-	-	-	-	-	-	-	-	-	-	-	-	-	-	-	-	-	-
	-		Middle	-	-	-		-	-		-	-		-	-		-	-		-	-		-	
26/5/17	10:50	Fine	Middle	4	25.80	25.80	25.85	8.16	8.16	8.13	28.86	28.86	28.86	87.7	87.7	87.4	6.05	6.05	6.03	5.10	5.09	5.14	4	3.50
	10:52		Middle	4	25.90	25.90		8.10	8.10		28.86	28.86		86.8	87.3		5.99	6.03		5.17	5.18		3	
29/5/17	15:18	Fine	Middle	3	27.60	27.60	27.80	7.96	7.96	7.98	28.49	28.49	28.46	85.0	83.0	82.9	5.70	5.57	5.56	6.92	6.99	7.04	4	3.00
	15:20		Middle	3	28.00	28.00		7.99	7.99		28.42	28.42		81.5	82.1		5.47	5.48		7.12	7.14		2	
31/5/17	16:30	Fine	Middle	4	28.30	28.30	28.40	8.09	8.09	8.10	30.40	30.40	30.40	88.9	88.7	88.8	5.83	5.82	5.82	3.89	3.82	3.80	<2	<2
	16:32		Middle	4	28.50	28.50		8.10	8.10		30.39	30.39		88.9	88.6		5.83	5.80		3.75	3.73		<2	

Remarks:

The water quality monitoring events on 24 May 2017 during both flood and ebb tide were cancelled due to the hoisting of Amber Rainstorm Warning Signal.



Graphic Presentation of Water Quality Result of M5B - Central Cooling Water Intake Groups





Graphic Presentation of Water Quality Result of Culvert J - Reference Station

